

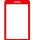


---

**£1,650 PCM**

1 Bedroom, Apartment - Retirement

15, Greenacres Lodge 287 Limpsfield Road, Warlingham, Surrey, CR6 9FA

 0800 077 8717

 [lettings@churchillsl.co.uk](mailto:lettings@churchillsl.co.uk)

 [churchillsl.co.uk](http://churchillsl.co.uk)

**Churchill**  
Sales & Lettings  
Retirement Property Specialists

# Greenacres Lodge

Located in the village of Warlingham, Greenacres Lodge is an exclusive development of 36 one and two bedroom retirement apartments. Set on the scarp slope of the North Downs, Warlingham's height allows for panoramic views over London.

For those with an interest in nature or walking, Blanchman's Farm Local Nature Reserve is an area of open recreational space covering some 25 acres, with a network of paths. Warlingham is served by two railway stations- Upper Warlingham station and Whyteleafe station, both located in Whyteleafe, under two miles from Warlingham Green.

Greenacres Lodge is within close walking distance of local shops and amenities, mainly centred around the green in Warlingham, which includes supermarkets, a pharmacy, post office, hairdressers, and various eateries. A Doctor and Dentist are within a few minutes walk.

Greenacres Lodge's manager is on hand throughout the day to support the residents and keep the development in perfect shape. They arrange many regular events in the Owners' Lounge from coffee mornings to games afternoons.

A Guest Suite is available for your friends and family to stay in. In addition, you are entitled to use of the Guest Suites at all Churchill Living developments across the country. Prices are available from the Lodge Manager.

Greenacres Lodge has been designed with safety and security at the forefront. The apartment has an emergency Careline system installed, monitored by the onsite Lodge Manager during the day and 24 hours, 365 days a year by the Careline team. Careline integrated intruder alarm, secure video entry system and sophisticated fire and smoke detection systems throughout both the apartment and communal areas provide unrivalled peace of mind.

Greenacres Lodge is managed by the award winning Churchill Estates Management, working closely with Churchill Living and Churchill Sales & Lettings to maintain the highest standards of maintenance and service for every lodge and owner.

Greenacres Lodge requires that at least one apartment Owner be over the age of 60 with any second Owner over the age of 55.



# Property Overview

**\*\*ONE BEDROOM GROUND FLOOR RETIREMENT APARTMENT WITH PATIO\*\***

Welcome to Greenacres Lodge! Churchill Sales and Lettings are delighted to be marketing this lovely one bedroom ground floor retirement apartment. The property is South facing and offers direct access to the communal gardens. This apartment is also offered with no onward chain.

The living room offers ample space for living and dining room furniture and benefits from a feature electric fire with attractive surround. A French door opens to a private patio with lovely views over the gardens.

The kitchen is accessed via the living room and offers a range of modern eye and base level units with working surfaces over and tiled splashbacks. There is a built in waist height oven, 4 ring electric hob with extractor hood over and a fridge and freezer. A window provides light and ventilation.

The bedroom is a good sized double room with a built in mirrored wardrobe. There is space for additional furniture and a window keeps this lovely bedroom bright and light.

The shower room offers a curved shower with handrail, a heated towel rail, WC and wash hand basin with vanity unit below.

Perfectly complementing this lovely apartment is a useful walk in storage cupboard located off the Hallway.

Call us today to book your viewing at Greenacres Lodge!



0800 077 8717



lettings@churchillsl.co.uk



churchillsl.co.uk

# Features

- One bedroom ground floor apartment with south facing patio
- Fitted Kitchen with integrated appliances
- Beautifully landscaped communal gardens
- Owners' private car park
- 24 hour Careline system for safety and security
- Owners' lounge & kitchen with regular social events
- Lodge Manager available 5 days a week
- Owners laundry room
- A Guest Suite is available for your friends and family to stay in. In addition, you are entitled to use of the Guest Suites at all Churchill Living developments across the country
- Rent includes heating & water & sewerage rates



# Key Information

OVER 60's RETIREMENT APARTMENT

Council Tax Band: D

Please check regarding Pets with Churchill Estates Management. Any consents given in relation to pets are subject to the terms of the lease and any further rules and regulations made by Churchill Estates Management.

**LANDLORD PAYS:** Service charges include: Careline system, buildings insurance, water and sewerage rates, Ground Source heating, communal cleaning, utilities and maintenance, garden maintenance, lift maintenance & Lodge Manager

Service charges include: Careline system, buildings insurance, water and sewerage rates, communal cleaning, ground source heating, communal utilities and maintenance, garden maintenance, lift maintenance, Lodge Manager and a contribution to the contingency fund. **THESE ARE PAID BY THE LANDLORD.**

## Security Deposit

A security deposit equal to 5 week's rent will be payable at the start of the tenancy. This covers damages or defaults on the part of the tenant during the tenancy. It will be reimbursed at the end of the tenancy subject to the details of the agreement and the findings of the inventory check out report.

## Holding Deposit

A holding deposit equal to 1 weeks rent will be payable on acceptance of an application. This will be held and used towards the first months rent

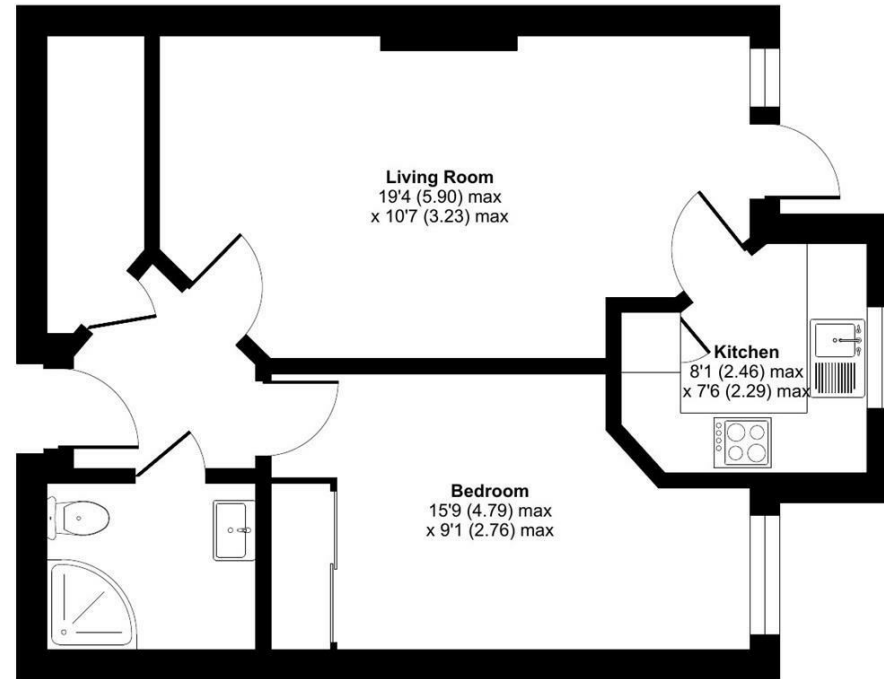
Please note: The holding deposit will be withheld if the applicant(s) or any relevant person (including any guarantor(s)) withdraw from the tenancy, fail a Right-to-Rent check, provide materially significant false or misleading information, or fail to sign their tenancy agreement (and / or Deed of Guarantee) within 30 days (or other deadline as mutually agreed in writing).

EPC Rating: C

 Floor plan produced in accordance with RICS Property Measurement 2nd Edition, Incorporating International Property Measurement Standards (IPMS2 Residential), © n/checom 2026. Produced for Churchill Sales & Lettings Limited. REF: 1418184

Approximate Area = 489 sq ft / 45.4 sq m


For identification only - Not to scale



**DESCRIPTION** Measurements are approximate and some may be maximum on irregular walls.

**CONSENTS** We have not had sight of any relevant building regulations, guarantees or planning consents all relevant documentation pertaining to this property should be checked with your legal advisor before exchanging contracts.

**Property Particulars Disclaimer:** These particulars are intended only as general guidance. The Company therefore gives notice that none of the material issued or visual depictions of any kind made on behalf of the Company can be relied upon as accurately describing any of the Specified Matters prescribed by any Order made under the Consumer Protection from Unfair Trading Regulations, 2008. Nor do they constitute a contract, part of a contract or a warranty.

 0800 077 8717

 [lettings@churchillsl.co.uk](mailto:lettings@churchillsl.co.uk)

 [churchillsl.co.uk](http://churchillsl.co.uk)



---

📞 0800 077 8717

✉️ [lettings@churchillsl.co.uk](mailto:lettings@churchillsl.co.uk) 🌐 [churchillsl.co.uk](http://churchillsl.co.uk)

**Churchill**  
Sales & Lettings  
Retirement Property Specialists